

# How to get the full 16 digit id\_code into MS Excel

*Microsoft Excel csv import utility only captures the first 15 digits of an imported column even if it is quoted text in the source file. Excel does not discriminate between quoted and unquoted strings in a ascii table. Excel looks at a long string of digits and decides it's numeric and only takes the first 15 digits. Excel only supports 15 significant digits as a numeric. Therefore, in order to retain the 16 digit MRFSS id\_code. That field must be imported as text.*

*MS Excel, by default, is associated with files via the 'csv' file name extension and will import these automatically with the 15 digit flaw and ignorance of quoted strings. You will not get that last digit of the id\_code in the numeric formatted id\_code field. Changing the extension to 'txt' prevents automatic import for comma delimited files and allows the user to use the 'Text Import Wizard' to control the formatting of the fields. The main task is to manually change the 16 character id\_code string into a 'text' format during import or during parsing by comma.*

## **Step by stem instructions:**

1. Download sample data at:

<http://www.psmfc.org/recfin/forms/dsamp.htm>

2. Right click on file and choose 'save target as.'

**ANGLERS DATA FROM MARINE RECREATIONAL SAMPLING AREAS FOR ALL SITES IN ALL COUNTIES IN ALL SUBREGIONS TARGETED ON ALL SPECIES**

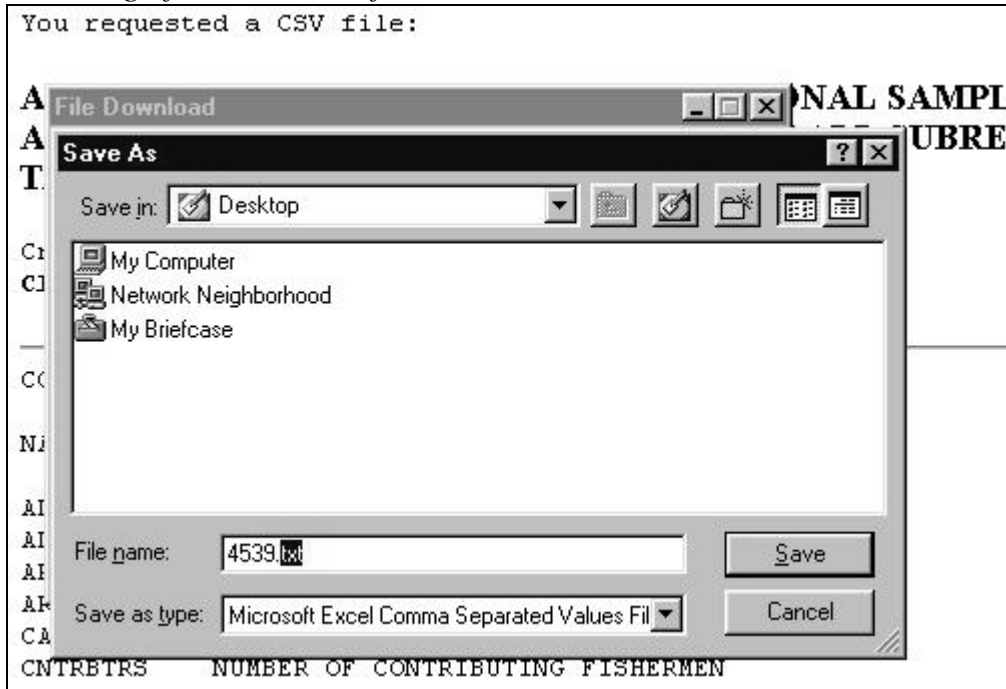
Creating CSV file with 3042 records...  
Click to view or shift-click to save your **FILE**.

CONTENTS OF YOUR FILE

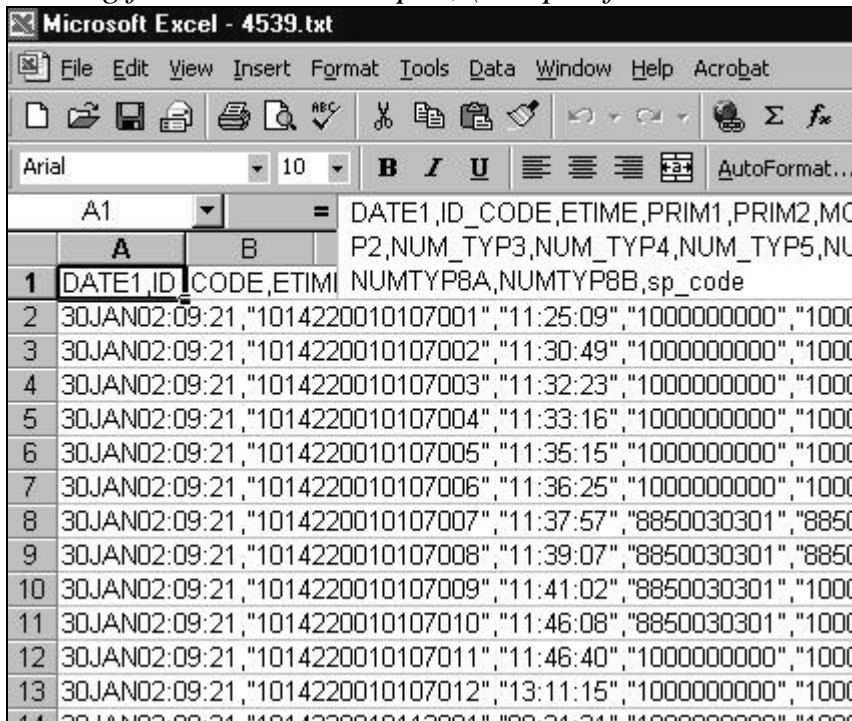
NAME	LABEL
ADD_HRS	ADDED HRS FISHED FOR INC TRIPS
ADD_PH	PHONE # PROVIDED FOR VERIFICATI
AREA	AREA OF FISHING
AREA_X	COLLAPSED AREA OF FISHING
CATCH	CATCH AVAILABLE FOR ID & COUNTI
CNTRBTRS	NUMBER OF CONTRIBUTING FISHERME
CNTY	COUNTY OF INTERCEPT

Context menu options: Open, Open in New Window, **Save Target As...**, Print Target, Cut, Copy, Copy Shortcut, Paste, Add to Favorites..., Properties

3. Change file extension from 'csv' to 'txt'.

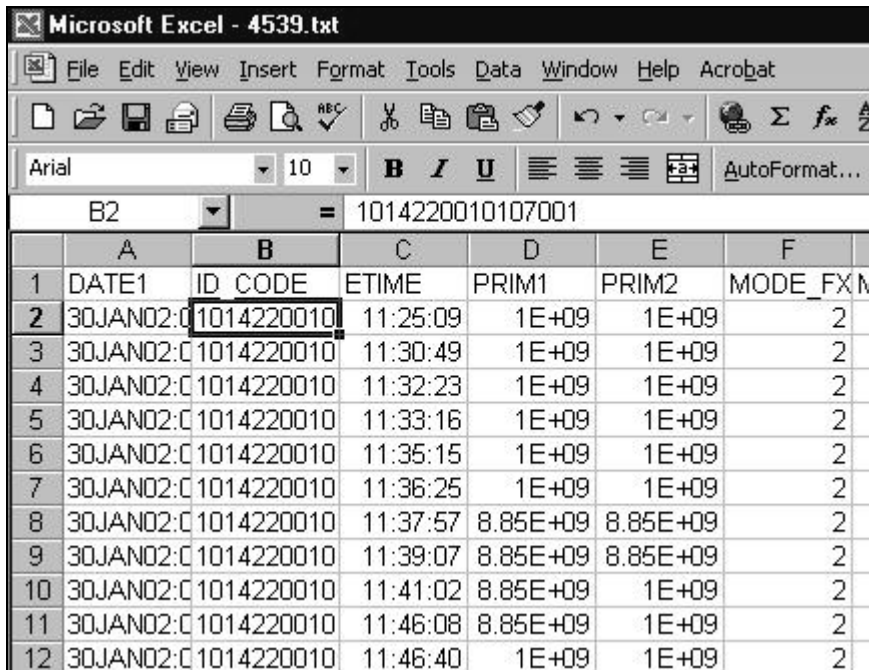


4. Drag file into excel to open, (or open from inside excel and skip to step 6)





## 9. Volia!



Microsoft Excel - 4539.txt

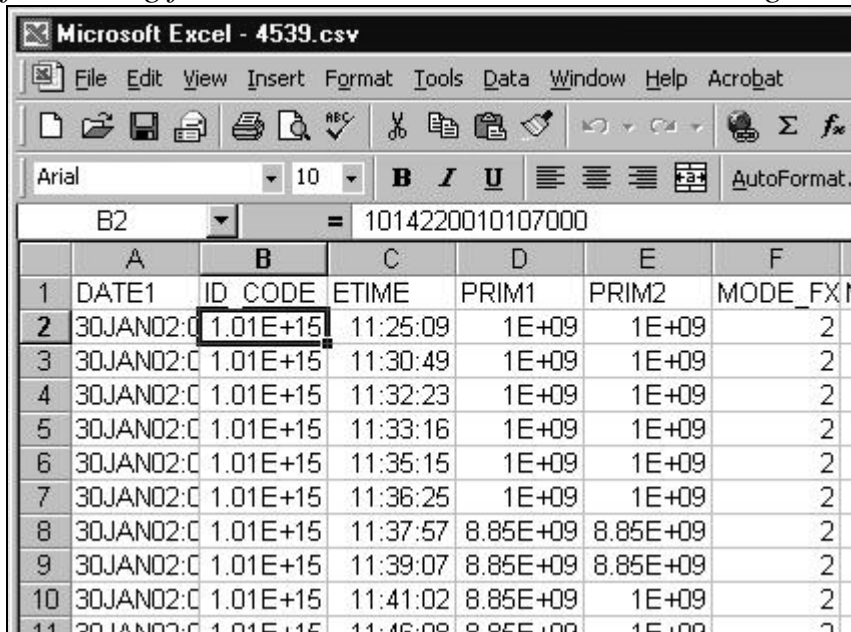
File Edit View Insert Format Tools Data Window Help Acrobat

Arial 10 B I U AutoFormat...

B2 = 1014220010107001

	A	B	C	D	E	F
1	DATE1	ID CODE	ETIME	PRIM1	PRIM2	MODE_FXN
2	30JAN02:0	1014220010107001	11:25:09	1E+09	1E+09	2
3	30JAN02:0	1014220010	11:30:49	1E+09	1E+09	2
4	30JAN02:0	1014220010	11:32:23	1E+09	1E+09	2
5	30JAN02:0	1014220010	11:33:16	1E+09	1E+09	2
6	30JAN02:0	1014220010	11:35:15	1E+09	1E+09	2
7	30JAN02:0	1014220010	11:36:25	1E+09	1E+09	2
8	30JAN02:0	1014220010	11:37:57	8.85E+09	8.85E+09	2
9	30JAN02:0	1014220010	11:39:07	8.85E+09	8.85E+09	2
10	30JAN02:0	1014220010	11:41:02	8.85E+09	1E+09	2
11	30JAN02:0	1014220010	11:46:08	8.85E+09	1E+09	2
12	30JAN02:0	1014220010	11:46:40	1E+09	1E+09	2

*What it looks like if you did it wrong (opened the csv file and get default formatting for the id\_code column – lost the last digit “1”)!*



Microsoft Excel - 4539.csv

File Edit View Insert Format Tools Data Window Help Acrobat

Arial 10 B I U AutoFormat.

B2 = 1014220010107000

	A	B	C	D	E	F
1	DATE1	ID CODE	ETIME	PRIM1	PRIM2	MODE_FXN
2	30JAN02:0	1.01E+15	11:25:09	1E+09	1E+09	2
3	30JAN02:0	1.01E+15	11:30:49	1E+09	1E+09	2
4	30JAN02:0	1.01E+15	11:32:23	1E+09	1E+09	2
5	30JAN02:0	1.01E+15	11:33:16	1E+09	1E+09	2
6	30JAN02:0	1.01E+15	11:35:15	1E+09	1E+09	2
7	30JAN02:0	1.01E+15	11:36:25	1E+09	1E+09	2
8	30JAN02:0	1.01E+15	11:37:57	8.85E+09	8.85E+09	2
9	30JAN02:0	1.01E+15	11:39:07	8.85E+09	8.85E+09	2
10	30JAN02:0	1.01E+15	11:41:02	8.85E+09	1E+09	2
11	30JAN02:0	1.01E+15	11:46:08	8.85E+09	1E+09	2
12	30JAN02:0	1.01E+15	11:46:40	1E+09	1E+09	2