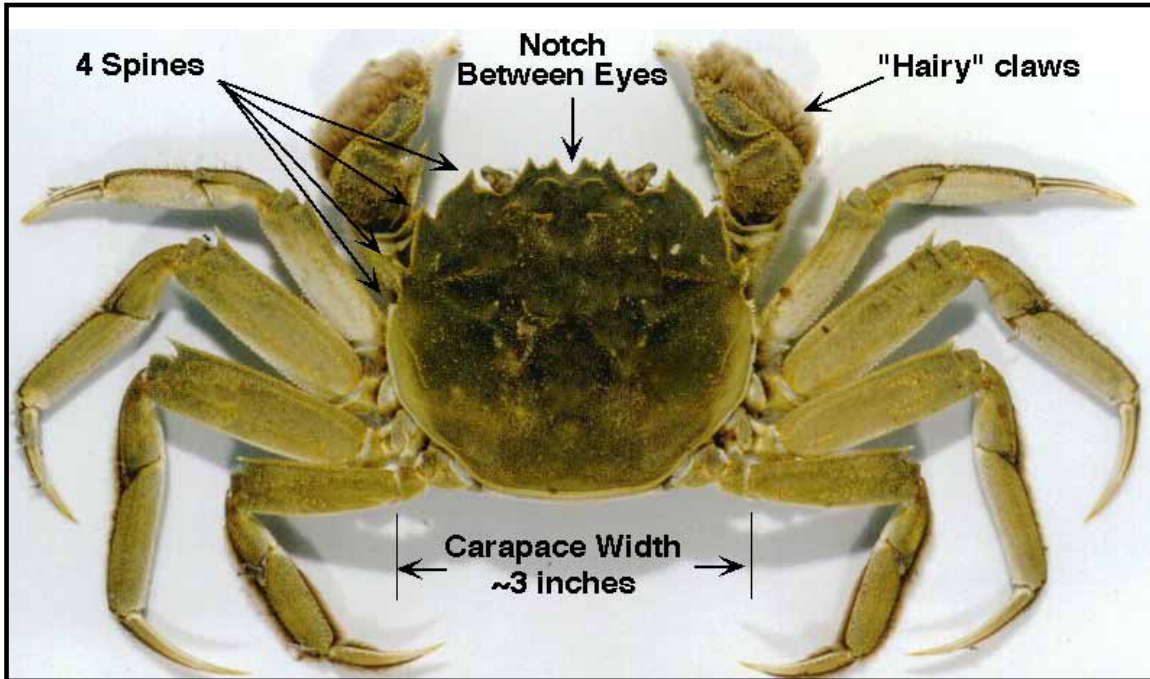


WANTED



DEAD or ALIVE

MITTEN CRAB

A NON-NATIVE SPECIES IN THE COLUMBIA RIVER

This crab recently entered the Columbia River system.

It may damage native species and habitat. Help track and document its spread and impact.

Distinguishing characteristics are its large, "hairy" claws and presence in freshwater.

If you find one of these crabs in the Columbia River, or elsewhere, please report it to a local Department of Fish and Wildlife office or call the toll-free

Oregon Invasive Species Hotline: 1-866-INV ADER (1-866-468-2337)

*For additional information on Mitten crabs contact:
Center for Lakes and Reservoirs • Portland State University
503.725.3834 • www.clr.pdx.edu
in cooperation with*

Pacific States Marine Fisheries Commission • Bonneville Power Administration • US Fish and Wildlife Service